

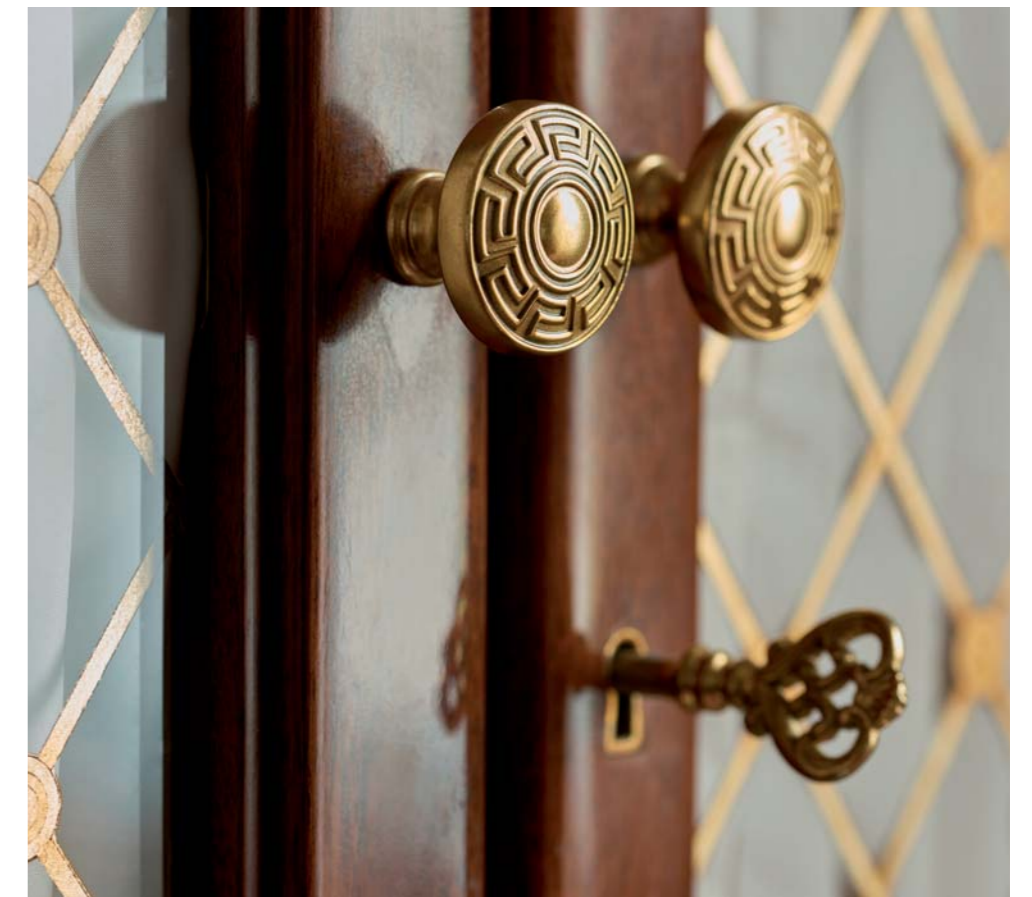


## *The GROSVENOR Suite*

Spacious and homely, Grosvenor Suites offer views over Wellington Arch and Green Park, or inside-facing for a quieter stay. A mahogany-panelled entrance hall leads to a spacious living room separated from an elegant bedroom with king-sized bed. Suites are up to 73 sq m/786 sq ft in size and include generous desk space and a vanity table.





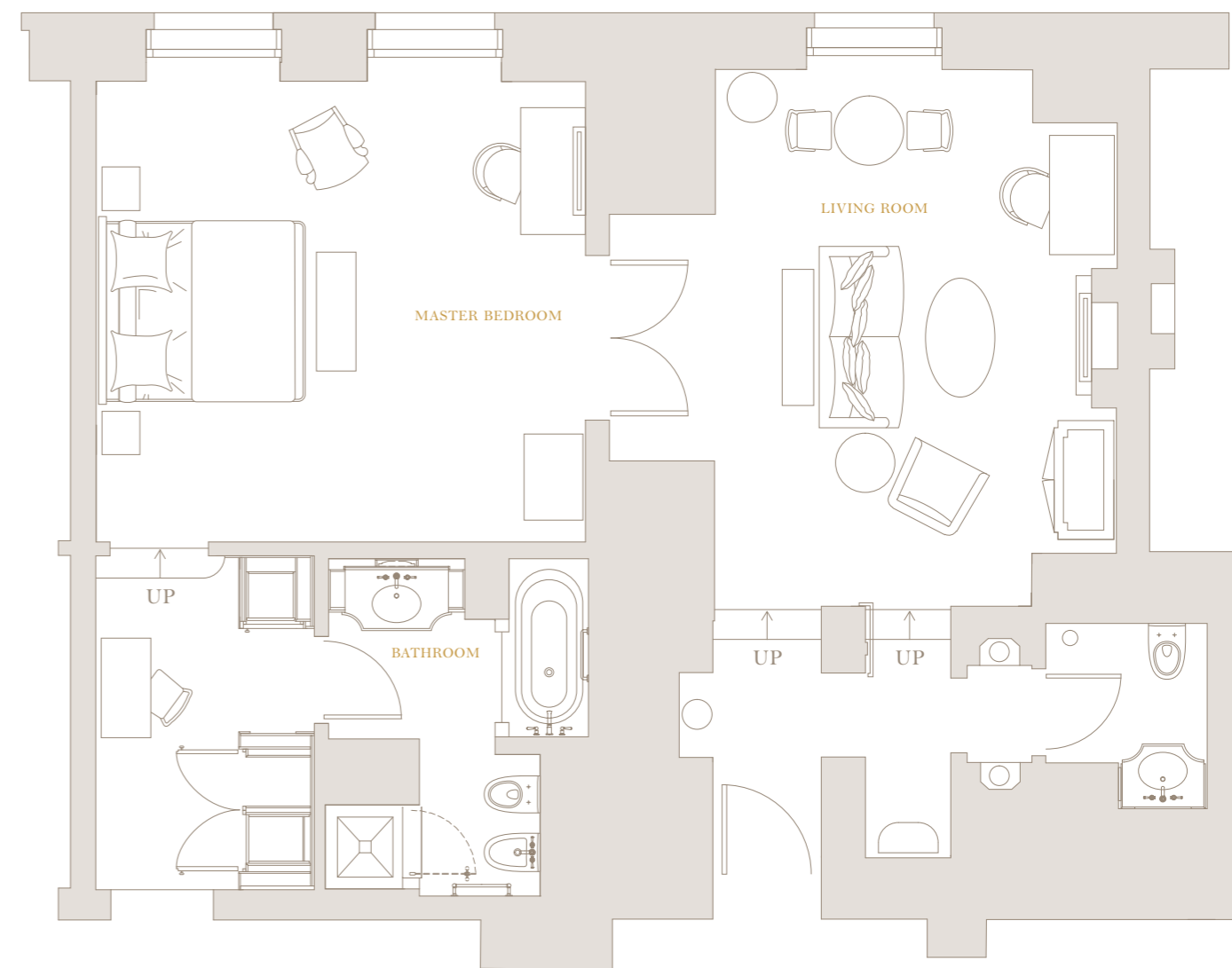


# The GROSVENOR Suite

1 BEDROOM

## FEATURES

<i>Size</i>	Up to 73 sq m (786 sq ft)
<i>Occupancy</i>	Up to 2 adults and 1 child, or 3 adults
<i>Bed</i>	King sized
<i>Bathroom</i>	Walk-in shower and bathtub in all suites Separate guest bathroom available in some suites
<i>Connecting Room</i>	Not available
<i>Views</i>	Wellington Arch or inside facing



Example only, exact floor plans may vary